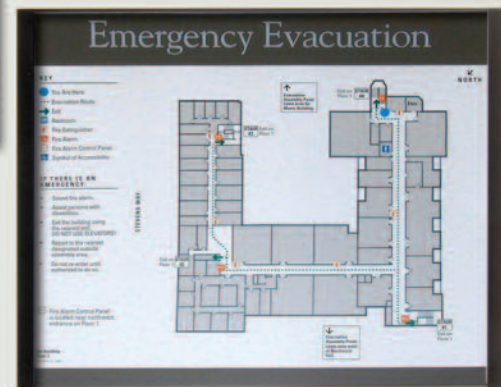


COHERENT WINDOW SERIES

Fabricated from aluminum with a styrene backer, Coherent Window Series is a simple straight-forward and economical frame system that will accommodate a variety of inserts from paper to 1/16" material. Inserts are protected by our matte-clear lens. Standard anodized colors include: **POLISHED SILVER, POLISHED ROSE GOLD, SATIN SILVER, MATTE BLACK AND POLISHED YELLOW GOLD.** Special anodized colors include: **ARCHITECTURAL BRONZE, JRS BRONZE, SATIN ROSE GOLD AND SATIN YELLOW GOLD.** **Special anodized colors require additional production time and have a 25% up charge.*



STANDARD FORMAT



Technical Information:

- Top/Bottom Square Rail: 3/8" face width and 5/16" outside depth
- Side Rails: 3/32" face width
- Designed to accommodate paper and up to 1/16" material
- 1/16" Black Styrene backer
- Mounting options: double sided tape or screw mount (extra charges apply for screw mount application). Must specify when ordering.
- Max rail length = 39"
- Additional backer available (additional charges apply)

Applications:

- Room Identification, Evacuation, Room rates
- Directional signage/directories
- Personnel ID signs
- Departmental ID signs
- A solution for Banks, Financial Institutions, Call Centers, Office Facilities, Hospitals, School & Colleges, Libraries, Hotels
- Daily Changeable Menus

Standard format of top and bottom, thicker rails will be manufactured unless otherwise specified. Specify inside height x width when ordering. Large frames may require additional backer. Additional charges apply.

Special anodized colors are available. Requires additional production time and have a 25% up charge.